

Blackpool Victoria Hospital Emergency Department

Monthly Bulletin: April 2010 to March 2011

This bulletin provides a breakdown of all attendances¹ at Blackpool Victoria Hospital Emergency Department (ED) between April 2010 and March 2011.

Between April 2010 and March 2011 there were 83,049 attendances to Blackpool Victoria Hospital ED. The month with the highest attendance was May with 8,282 attendances (**Figure 1**). There were more male than female attendances presenting at Blackpool Victoria Hospital ED (males=42,965; 52%).

Figure 2 illustrates age group of ED attendances for each month. The majority (31%) of ED attendances were aged 30-59 (n=25,972) or over 60 years old (n=25,877). Most ED attendances were self-referred (46%) or referred by an emergency call/ambulance (39%) (**Table 1**).

Table 2 details the injury group of ED attendances. The majority (90%) of attendances were recorded as other (including other injury and medical attendances). Sports injury accounted for 3% of attendances, assaults 3% and road traffic collisions (RTCs) 2%.

Table 3 shows the location of incident for ED attendances. It shows that almost six in ten (59%) of incidents occurred in the home, and nearly a fifth (18%) occurred in public places.

The discharge destination for ED attendances is displayed in **Table 4**. It indicates that over half (54%) of attendances were discharged. Almost three in ten (29%) of attendances were admitted into hospital and 10% were referred.

Assault attendances

Between April 2010 and March 2011 there were 2,116 assault attendances to Blackpool Victoria Hospital ED. The month with the highest attendance was July with 220 attendances (**Figure 3**). There were more male than female assault attendances presenting at Blackpool Victoria Hospital ED (males=1,546; 73%).

Table 5 details the age group of assault attendances for each month. The majority of ED assault attendances were aged 15-29 (n=1,158; 55%) and 38% were 30-59 years old (n=810).

Table 6 shows the location of incident for assault attendances. It shows just under half (46%) occurred in a public place, with a quarter (25%) occurring in the home.

Table 7 illustrates the general discharge destination for assault attendances to Blackpool Victoria Hospital ED. Half (50%) were discharged without follow-up treatment, 29% required follow-up treatment. One in twenty (5%) assault attendances were admitted to hospital.

Figure 1: Gender of ED attendances by month, April 2010 to March 2011

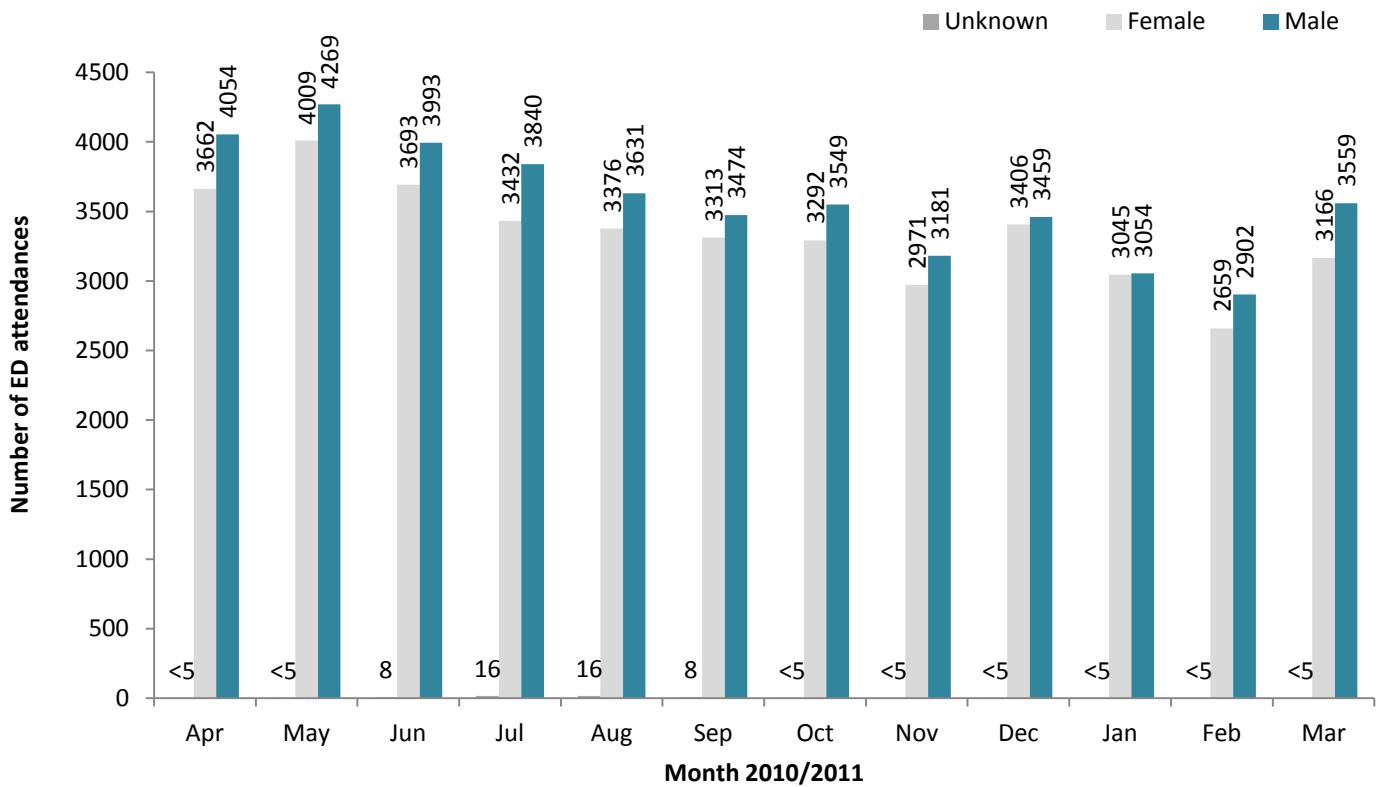


Figure 2: Age group of ED attendances by month, April 2010 to March 2011

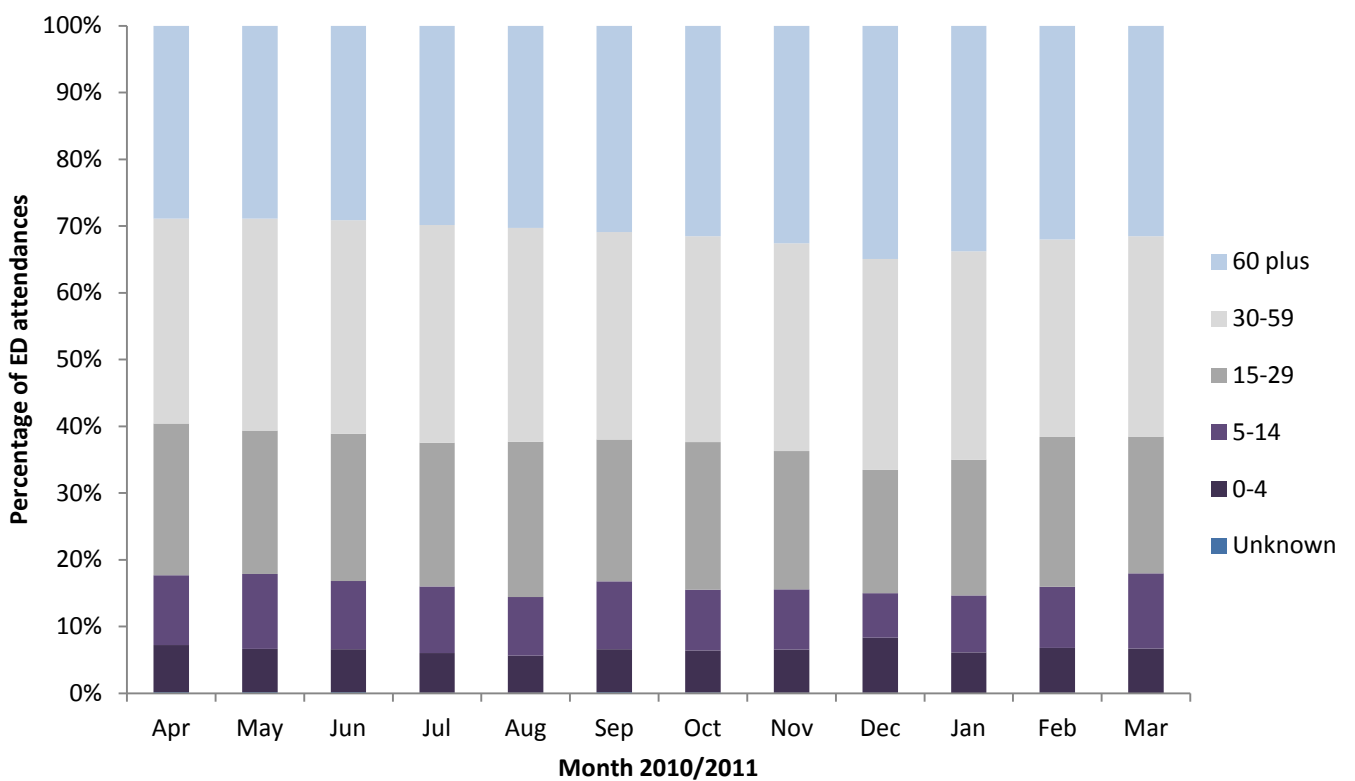


Table 1: ED attendances by source of referral and month, April 2010 to March 2011²³⁴⁵

Source of referral	Apr	May	Jun	Jul	Aug	Sep	Oct	Nov	Dec	Jan	Feb	Mar	Total	%
Self referral	4290	4596	4184	3194	3091	2906	2821	2606	2889	2594	2368	3074	38613	46
Emergency call/ambulance	2629	2827	2702	2900	2878	2688	2831	2576	3009	2611	2407	2722	32780	39
Other referrer	212	198	146	146	165	183	161	383	711	15	6	19	2345	3
GP	138	141	141	182	163	250	227	183	232	154	163	227	2201	3
FCMS	77	73	99	425	316	329	340	180	***	***	***	***	1839	2
Health Care Provide: same or other	***	***	***	***	***	***	***	***	***	632	527	574	1733	2
Walk-in centre	157	208	192	161	166	195	181	92	***	***	***	***	1352	2
Employer	36	43	44	82	83	80	91	***	***	50	55	53	639	1
Police	58	67	57	64	47	45	47	25	7	***	***	7	429	1
NHS Direct	47	47	71	50	32	34	37	19	***	***	***	***	337	0
ED staff	38	22	23	46	44	41	32	17	***	***	***	***	268	0
Educational establishment	13	29	11	***	***	19	17	25	16	38	33	48	254	0
Other hospital	18	24	16	23	28	17	42	17	***	***	***	***	185	0
Optician	***	***	***	6	6	***	9	***	***	***	***	***	33	0
LA/social services	***	***	***	***	***	7	***	5	***	***	***	***	27	0
Prison service	***	***	***	***	***	***	***	***	***	***	***	***	14	0
Total	7718	8282	7694	7288	7023	6795	6844	6152	6866	6101	5561	6725	83049	100

Table 2: ED attendances by injury group and month, April 2010 to March 2011^{6*}

Injury group	Apr	May	Jun	Jul	Aug	Sep	Oct	Nov	Dec	Jan	Feb	Mar	Total	%
Other injury	6903	7522	6996	6514	6278	6023	6035	5474	6293	5487	4890	5858	74273	89
Sports injury	289	236	217	213	209	287	258	217	70	171	192	308	2667	3
Assault	188	176	181	220	172	144	177	147	177	165	173	196	2116	3
RTC	162	176	139	145	192	167	182	216	172	107	134	154	1946	2
Overdose	128	138	122	156	140	131	152	64	118	128	139	159	1575	2
Deliberate self-harm	48	34	39	40	32	43	40	34	36	43	33	50	472	1
Total	7718	8282	7694	7288	7023	6795	6844	6152	6866	6101	5561	6725	83049	100

* In December 2010, the overdose injury group was removed due to a change in the ED's IT system. Since this time, cases have been categorised into one of the other injury groupings (e.g. 'other injury' / 'deliberate self-harm'). Such cases are however identifiable via another data field, 'presenting complaint'. Where injury group is recorded as 'other injury' and 'presenting complaint' is recorded as overdose/poisoning these cases have been categorised in this table as overdose/poisoning. Please note, during this period, 19 DSH cases also had overdose/poisoning recorded as their presenting complaint.

Table 3: ED attendances by location of incident and month, April 2010 to March 2011

Location	Apr	May	Jun	Jul	Aug	Sep	Oct	Nov	Dec	Jan	Feb	Mar	Total	%
Home	4519	4868	4406	4086	3797	3849	3899	3695	4373	4071	3492	4115	49170	59
Public place	1245	1295	1180	1369	1507	1247	1335	1139	1338	921	949	1181	14706	18
Other	1483	1619	1626	1323	1432	1160	1082	804	770	679	687	825	13490	16
Workplace	297	262	306	338	270	273	304	256	240	226	242	287	3301	4
Educational establishment	174	237	176	169	6	242	191	242	143	204	191	317	2292	3
Unknown	***	***	***	***	11	24	33	16	***	***	***	***	90	0
Total	7718	8282	7694	7288	7023	6795	6844	6152	6866	6101	5561	6725	83049	100

Table 4: ED attendances by discharge destination and month, Dec 2010 to March 2011⁷

Discharge destination	Dec	Jan	Feb	Mar	Total	%
Discharged	3621	3269	2941	3730	13561	54
Admitted	2129	1764	1628	1750	7271	29
Referred	625	606	583	772	2586	10
Incomplete treatment	0	350	312	357	1019	4
Transferred	73	72	58	70	273	1
Other	401	20	27	29	477	2
Died	17	20	12	17	66	0
Total	6866	6101	5561	6725	25253	100

Assaults

Figure 3: Number of ED assault attendances by gender and month, April 2010 to March 2011

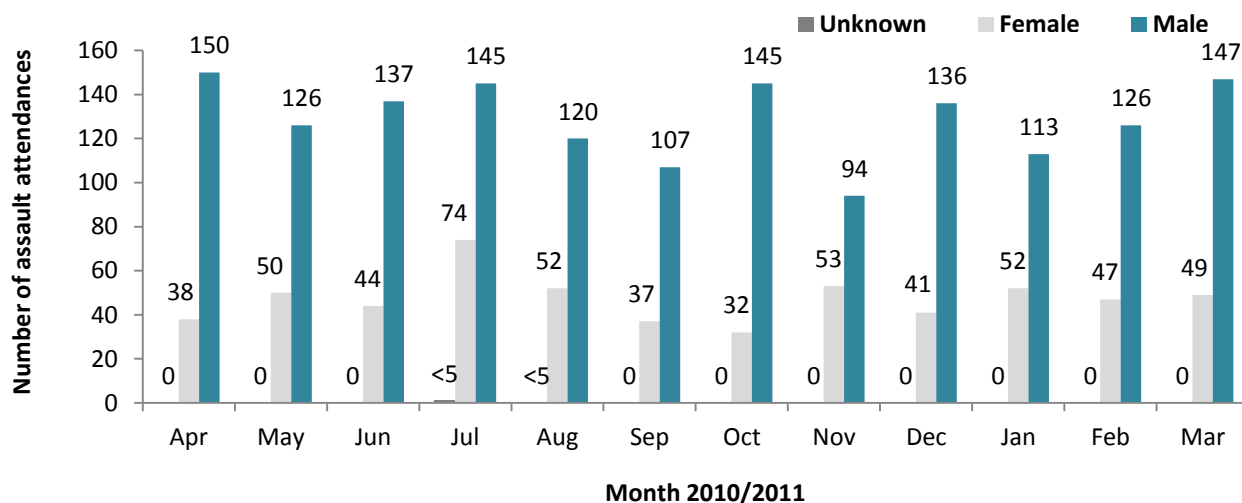


Table 5: ED assault attendances by age group and month, April 2010 to March 2011

Age group	Apr	May	Jun	Jul	Aug	Sep	Oct	Nov	Dec	Jan	Feb	Mar	Total	%
0-4	***	***	***	***	***	***	***	***	***	***	***	***	***	0
5-14	7	12	8	***	6	8	12	6	***	7	6	11	89	4
15-29	107	91	110	130	105	69	92	68	91	93	101	101	1158	55
30-59	69	69	60	84	58	59	70	67	78	56	62	78	810	38
60 plus	5	***	***	***	***	7	***	6	5	9	***	6	53	3
Unknown	***	***	***	***	***	***	***	***	***	***	***	***	***	0
Total	188	176	181	220	172	144	177	147	177	165	173	196	2116	100

Table 6: ED assault attendances by location of incident and month, April 2010 to March 2011

Location	Apr	May	Jun	Jul	Aug	Sep	Oct	Nov	Dec	Jan	Feb	Mar	Total	%
Public place	94	71	82	121	73	67	90	53	84	66	80	83	964	46
Home	35	53	42	40	33	32	39	45	57	60	44	59	539	25
Other	49	42	48	49	60	40	39	39	28	25	42	41	502	24
Workplace	***	5	***	***	***	***	***	***	***	***	***	***	72	3
Educational establishment	***	5	***	***	***	***	***	***	***	***	***	***	39	2
Total	188	176	181	220	172	144	177	147	177	165	173	196	2116	100

Table 7: ED assault attendances by discharge destination and month, April 2010 to March 2011

Discharge destination	Apr	May	Jun	Jul	Aug	Sep	Oct	Nov	Dec	Jan	Feb	Mar	Total	%
Discharged	73	77	77	82	65	59	96	91	105	109	118	109	1061	50
Follow-up	75	61	73	87	71	52	56	25	25	22	23	37	607	29
Other	33	28	***	46	29	***	18	20	35	27	25	33	349	16
Admitted	7	10	***	5	7	***	7	11	12	7	7	17	99	5
Total	188	176	181	220	172	144	177	147	177	165	173	196	2116	100

Published June 2011

Johnathan Rooney (Lancashire TIIG Officer)

Centre for Public Health, Liverpool John Moores University, 2nd Floor, Henry Cotton Campus, Liverpool, L3 2ET

Tel: 0151 231 4513 Email: j.rooney@ljmu.ac.uk

Website: www.tiig.info (please note data requests should be made through the website)

¹For other EDs, TIIG reports on injuries only. However, this report includes all attendances at Blackpool Victoria Hospital ED. This is due to the medical and injury attendances being categorised within the patient group 'other'.

²GP=general practitioner, LA=local authority and FCMS=Flyde Coast Medical Services Ltd

³Please note that all numbers less than five have been suppressed (with ***) in line with patient confidentiality; and if there is only one number less than five in a category then two numbers will be suppressed to prevent back calculations from totals.

⁴Please note percentages might not add to one hundred due to rounding.

⁵The decrease in figures for November and December for some fields is due to a change in IT system at Blackpool Victoria Hospital ED. This has led to certain fields being no longer collected.

⁶Due to low numbers firework injuries (n=32) have been included under "other".

⁷For previous months please refer to 'January to December 2010' monthly bulletin report available at www.tiig.info.